

Fax

I would like to receive information on AUTOMATIONWORX.

I would like to receive further information on:

Please send your newsletter to the e-mail address below.

I would like a personal consultation without obligation

Name _____

Company _____

Department _____

Address _____

Postal Code/City _____

Phone _____

E-mail _____

Catalog
CLIPLINE
Modular Terminal Blocks, Marking and
Mounting Materials, Tools



Catalog
PLUSCON
Industrial Plug Connectors



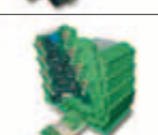
Catalog
COMBICON
PCB Connection Systems and
Electronic Housings



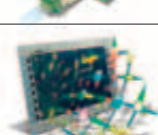
Catalog
TRABTECH
Surge Protection



Catalog
INTERFACE
Signal Converters



Catalog
AUTOMATIONWORX
Automation Technology



CD-ROM Complete Catalog with Price List

Supplement Catalog

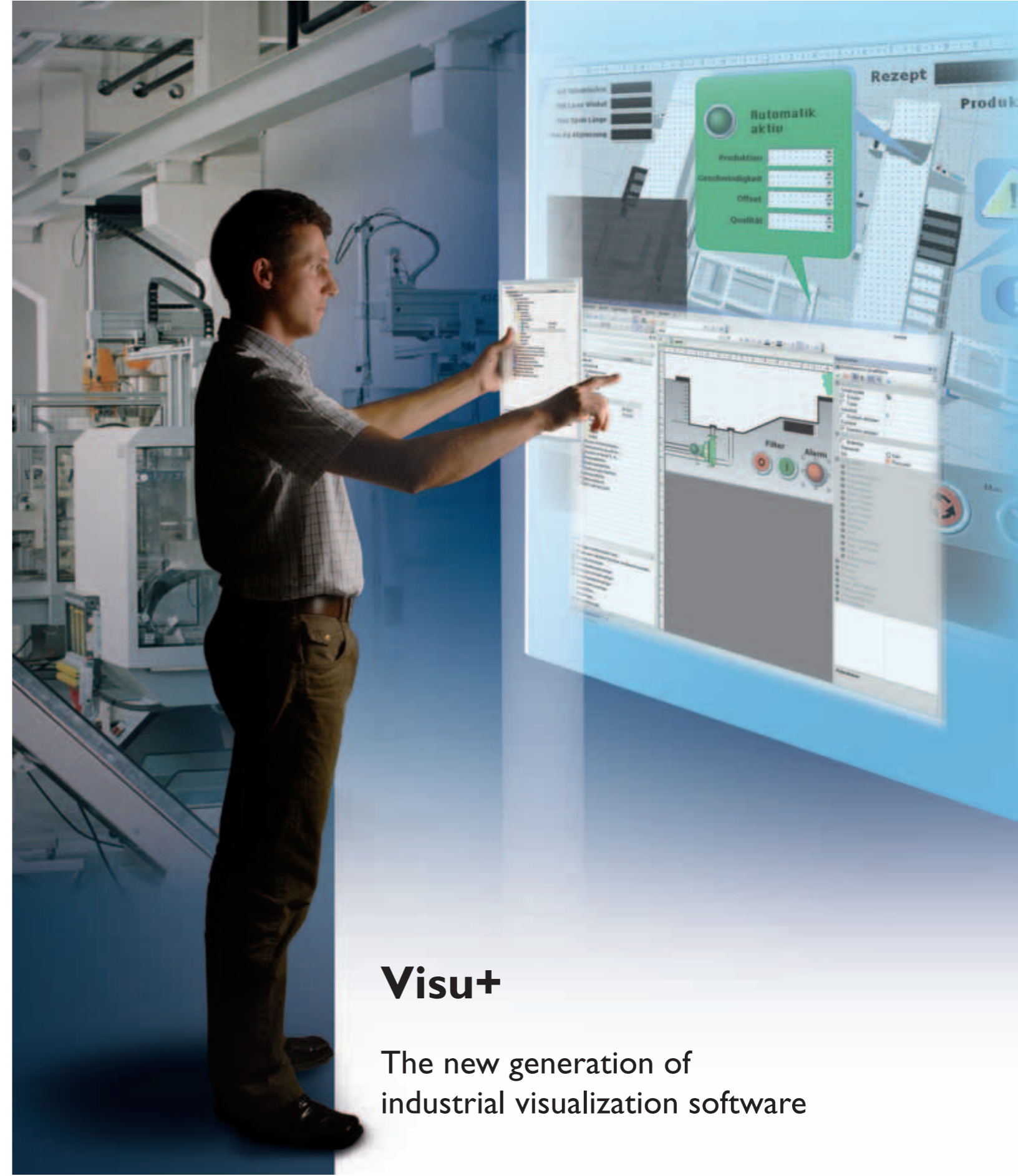
Latest Price List

Online service

You will find our wholesale partners at
www.grosshandel.phoenixcontact.de

The eShop and information on products,
services and events can be found on our Web
site at: www.phoenixcontact.de

PHOENIX CONTACT GmbH & Co. KG
32823 Blomberg, Germany
Tel.: ++49/5235/3-00
Fax: ++49/5235/3-1 07 99
www.phoenixcontact.de



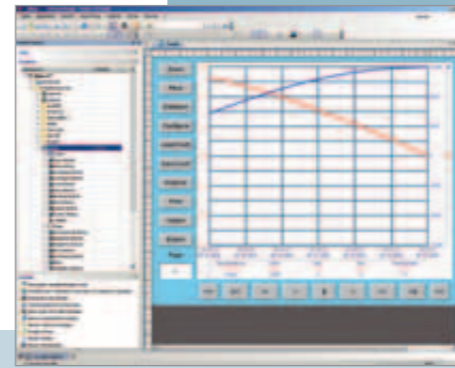
Visu+

The new generation of
industrial visualization software

Powerful visualization solution for all areas of application

With Visu+, Phoenix Contact offers a new visualization software for industrial applications. In addition to such SCADA functions as Operation & Monitoring, trending and alarm handling, further functions for production data acquisition and logging as well as coupling to database and Enterprise Resource Planning (ERP) systems are also available. Coupling to the control level is via OPC.

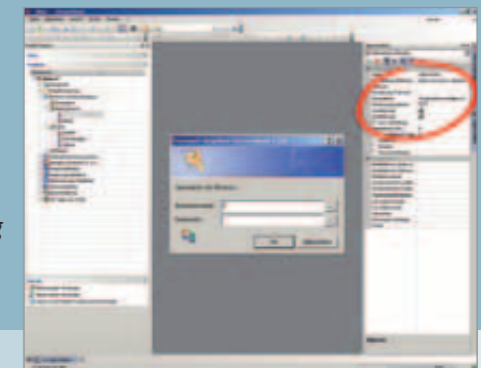
You now have a powerful visualization solution with which you can network and visualize all areas of your company simply, flexibly and fast.



Analog signals are visualized clearly with trend graphs



Alarms can be prepared for statistics during further processing



Comprehensive safety management safeguards against unauthorized access

Easy handling

The development interface of Visu+ is designed clearly and operation is intuitive. All the visualization elements, for example, can be selected with a mouse click or using Drag & Drop. In addition to this, comprehensive object libraries are available for various sectors. This saves considerable initial training time and costs.

Utmost safety

An integrated encoding algorithm safeguards all the data in Visu+. Password user management ensures that only authorized staff can access the information both locally and externally.

Worldwide access

The web-capability of Visu+ makes it possible to diagnose and remedy malfunctions in machines and plants anywhere in the world from the comfort of your own office. Even a cell phone can be used as a web client to call up or transmit data. Expensive service assignments are a thing of the past.

Seamless information flow

Visu+ can easily be connected to existing databases or integrated in your ERP system. Detailed tracking of the batches produced means that it is possible to provide a comprehensive proof of quality, for example, as is required in various sectors (FDA standard).

Varied areas of application

As a high-performance visualization solution, Visu+ runs both on small-scale ARM processor platforms and on multiple processor server systems. It is therefore possible to use the software not only as a full SCADA package in the control room with numerous networked PCs, but also on the Windows CE terminal directly on the machine.

The AUTOMATIONWORX Software Suite

Phoenix Contact provides you with a collection of various software tools that you will need for the automation of your machines and plants. The suite includes:

PC WORX

As uniform IEC 61131 programming environment for all controllers from Phoenix Contact

Config+

For simple project planning and startup of INTERBUS networks

Diag+

For convenient diagnostics of INTERBUS systems

Visu+

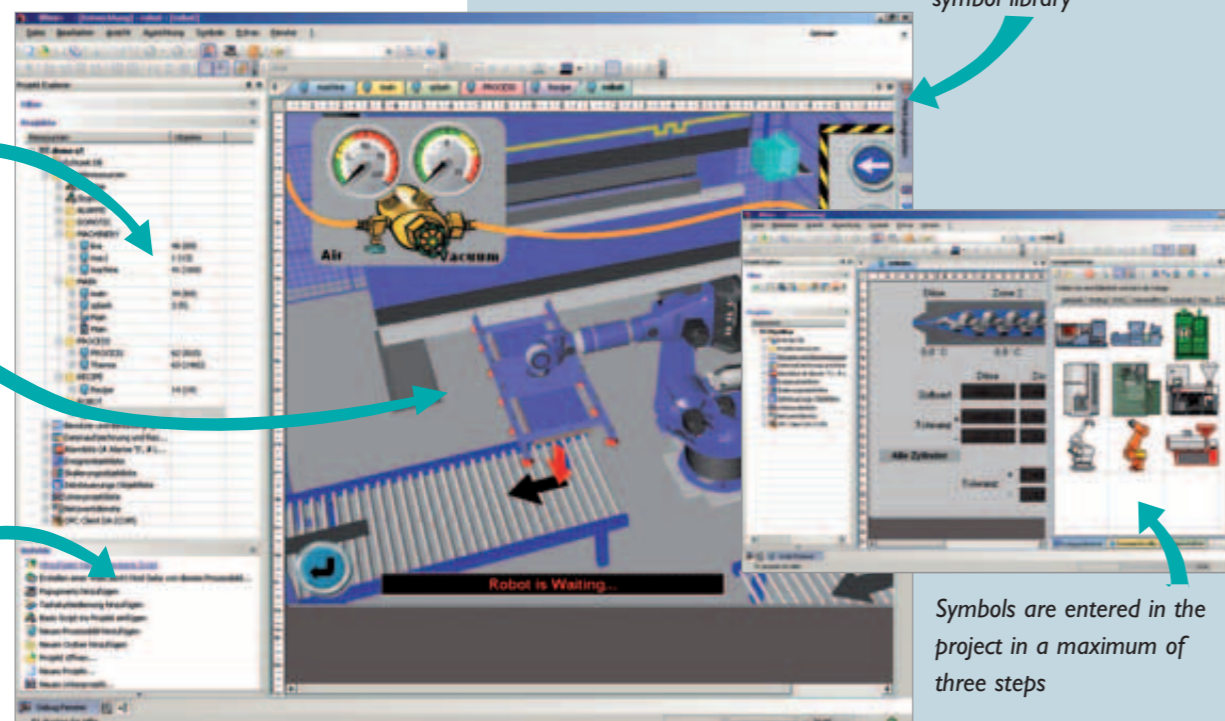
As the web-capable visualization solution for both small-scale display devices and for large-scale control rooms

Navigation window for intuitive access to all project variables and elements

Graphic workspace

Command window to display all the application commands for the selected element

Tool box and symbol library



Symbols are entered in the project in a maximum of three steps

Type	Order No.
Visu+ (Development Tool)	2985770
Visu+ RT Basic (Runtime for Windows XP)	2985644
Visu+ RT Basic XT (Runtime for Windows XP)	2985699
Visu+ RT Pro (Runtime for Windows XP)	2985822
Visu+ RT Pro XT (Runtime for Windows XP)	2985877